



4331 EUCALYPTUS AVE. ~~ CHINO, CA. 91710
 909-597-7800 Fax 909-597-7185

1984-2001 JEEP XJ 4" LIFT FRT. SWAY BAR DISCONNECT KIT 4WD
 FTS94020BK

PARTS LIST:

Qua	Part #	Description
2	FT50013	Frt Sway Bar Bracket Upper
1	FT50119	Frt Sway Bar Brk. Lower Dr.
1	FT50118	Frt. Sway Bar Brk. Lower Pas
1	FT50110BK	4" Frt Sway Bar Link Drv
1	FT10109BK	4" Frt Sway Bar Link Pass
2	FT50111	Sway Bar Link Frame Bracket
2	FT42	Sway Bar Pin
2	FT90036	Lynch Pin
2	FT45	Sway Bar Key Ring 1 1/2"

HARDWARE LIST:

Qua	Part #	Description
2	37160003052	3/8"-16 Nylok Nut Gr. 8
2	37000005052	3/8" SAE Flat Washer
2	50133001882	1/2"-13 x 3" Button Head Bolt Gr. 8
2	50131501081	1/2"-13 x 1 1/2" Bolt Gr. 8
4	50130003052	1/2"-13 Nylok Nut Gr. 8
8	50000005052	1/2" SAE Flat Washer
4	31181001152	5/16" x 1" Self Tapping Screw
1	FTLOCK	Thread Locking Compound
1	FT50048	Bushing Kit
1	FT50089	Sleeve Kit
1	FT94020i	Instruction Sheet

TOOL LIST:

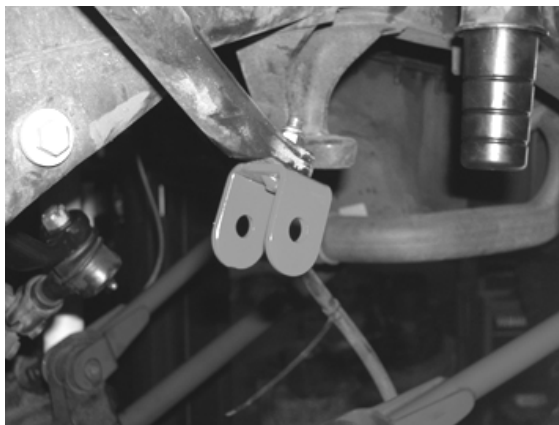
- ASSORTED METRIC AND S. A. E. WRENCHES AND SOCKETS
- DRILL WITH ASSORTED DRILL BITS
- MIG WELDER

READ BEFORE BEGINNING INSTALLATION:

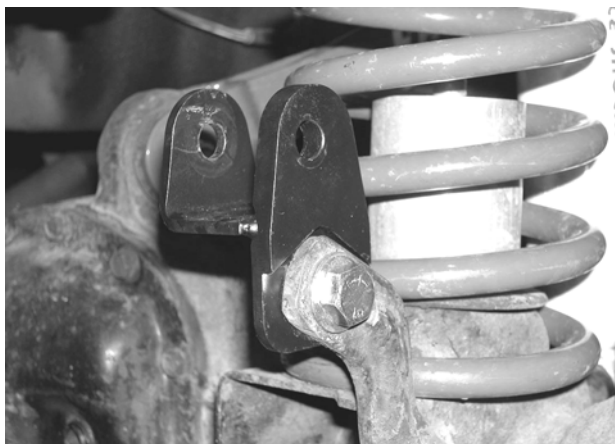
- READ ALL INSTRUCTIONS THOROUGHLY FROM START TO FINISH BEFORE BEGINNING INSTALLATION.
- CHECK ALL PARTS INCLUDED IN THIS KIT TO THE PARTS LIST ABOVE BEFORE BEGINNING INSTALLATION OF THIS KIT. IF ANY PARTS ARE MISSING, CONTACT FABTECH AT 909-597-7800.
- DO NOT ALTER THE FINISH OF THESE COMPONENTS, EXAMPLE- CHROMING, ZINC PLATING OR PAINTING. CHANGING THE FINISH CAN CAUSE STRUCTURAL FATIGUE OF COMPONENTS.

INSTRUCTIONS:

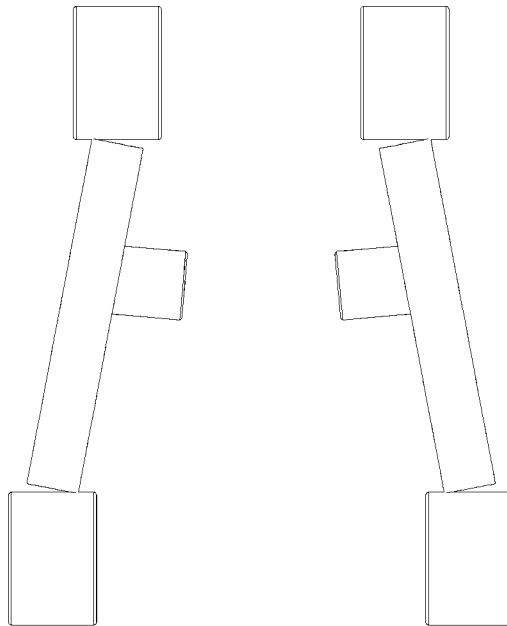
1. Disconnect the negative terminal on the battery. With the vehicle on level ground set the parking brake and block the rear tires. Raise the front of the truck and place jack stands under the frame just behind the front tires. Remove the front wheels.
2. Remove the original sway bar end links from both sides of the front sway bar and discard.
3. Working from the driver side of the truck, locate the new upper sway bar end link bracket FT50013. Attach to the factory sway bar with the supplied 3/8" nyloc nut and washer. SEE PHOTO BELOW.



4. Locate the new lower sway bar end link bracket FT50119 (driver) FT50118 (Passenger). Attach the lower sway bar bracket to the inner side of the factory axle mount with the supplied 1/2" x 1 1/2" bolt, nut, and washer. **Note: there is a driver and passenger side bracket, when installing the bracket make sure the key way on the bracket is locked into the factory mount and the new bracket is straight up and down when attached to the axle.** Torque the bolt to 45 ft lbs. Using a Mig Welder, weld the lower sway bar mount to the axle mount. SEE PHOTO BELOW.



5. Locate the new sway bar end link FT50110BK (driver). (**Note: There is a driver and passenger sway bar end link, make sure you install the proper sway bar end link to the correct side), SEE DRAWING BELOW.** Install one hour glass bushing and one ½” sleeve into each end of the new sway bar end link. With the supplied ½” x 3 ½” Button head bolt, nut, and washers connect the sway bar link to the new upper sway bar mount. (**Note: when installing the sway bar end links, make sure the disconnect sleeve on the end link is facing the rear of the truck).** SEE DRAWING BELOW.



FT50109BK (passenger side)

FT50110BK (driver side)

6. Locate the Fabtech quick disconnect frame bracket FT50111 and the supplied quick disconnect pin FT50025. Connect the frame bracket and the pin together, as shown below. Once connected, swing the sway bar end link with the frame bracket forward until the frame bracket comes in contact with the frame. Mark the two holes on the frame with a center punch and drill guide holes. With the supplied 5/16” self tapping bolt, attach the quick disconnect frame bracket to the frame. Use a small amount of the supplied thread locking compound on the self tapping bolts. SEE PHOTOS BELOW.



7. Repeat steps two through six on the passenger side of the truck.

8. Install the wheels back onto the truck and torque the lug nuts to the wheel manufacture specs. Remove the jack stands and place the truck on the ground.
9. With both driver side and passenger side assembled, connect the sway bar links to the lower mounts with the supplied sway bar disconnect pins and lynch pins. SEE PHOTO BELOW.



Note The Offset Of The Sway Bar End link (Driver Side Shown)

10. Recheck all nuts and bolts for proper torque tightness before driving.

RETORQUE ALL NUTS, BOLTS AND LUGS AFTER 50 MILES AND PERIODICALLY THEREAFTER.

For technical assistance call: 909-597-7800

Product Warranty and Warnings-

Fabtech provides a Limited Lifetime Warranty to the original retail purchaser who owns the vehicle, on which the product was originally installed, for defects in workmanship and materials.

The Limited Lifetime Warranty excludes the following Fabtech items; bushings, bump stops, ball joints, tie rod ends, limiting straps, cross shafts, heim joints. These parts are subject to wear and are not considered defective when worn. They are warranted for 60 days from the date of purchase for defects in workmanship.

Take apart shocks are considered a serviceable shock with a one year warranty on leakage only. Service seal kits are available separately for future maintenance. All other shocks are covered under our Limited Lifetime Warranty.

Fabtech does not warrant any product for finish, alterations, modifications and/or installation contrary to Fabtech's instructions. Alterations to the finish of the parts including but not limited to painting, powder coating, plating and/or welding will void all warranties. Some finish damage may occur to parts during shipping which is considered normal and is not covered under warranty.

Fabtech products are not designed nor intended to be installed on vehicles used in race applications or for racing purposes or for similar activities. (A "RACE" is defined as any contest between two or more vehicles, or any contest of one or more vehicle against the clock, whether or not such contest is for a prize). This warranty does not include coverage for police or taxi vehicles, race vehicles, or vehicles used for government or commercial purposes. Also excluded from this warranty are sales outside of the United States of America.

Installation of most suspension products will raise the center of gravity of the vehicle and will cause the vehicle to handle differently than stock. It may increase the vehicle's susceptibility to a rollover, on road and off road, at all speeds. Extreme care should be taken to operate the vehicle safely at all times to prevent rollover or loss of control resulting in serious injury or death. Fabtech front end Desert Guards may impair the deployment or operation of vehicles equipped with supplemental restraining systems/air bag systems and should not be installed if the vehicle is equipped as so.

Fabtech makes every effort to ensure suspension product compatibility with all vehicles listed in the catalog, but due to unknown auto manufacturers production changes and/or inconsistencies by the auto manufacturer, Fabtech cannot be responsible for 100% compatibility, including the fitment of tire and wheel sizes listed. The Tire and Wheel sizes listed in Fabtech's catalog are only a guideline for street driving with noted fender trimming. Fabtech is not responsible for damages to the vehicle's body or tires.

Fabtech's obligation under this warranty is limited to the repair or replacement, at Fabtech option, of the defective product only. All costs of removal, installation or re-installation, freight charges, incidental or consequential damages are expressly excluded from this warranty. Fabtech is not responsible for damages and/or warranty of other vehicle parts related or non related to the installed Fabtech product. This warranty is expressly in lieu of all other warranties expressed or implied. This warranty shall not apply to any product that has been subject to accident, negligence, alteration, abuse or misuse as determined by Fabtech.

Fabtech suspension components must be installed as a complete system including shocks as shown in our current catalog. All warranties will become void if Fabtech parts are combined and/or substituted with other aftermarket suspension products. Combination and/or substitution of other aftermarket suspension parts may cause premature wear and/or product failure resulting in an accident causing injury or death. Fabtech does not warrant products not manufactured by Fabtech.

Installation of Fabtech product may void the vehicles factory warranty; it is the consumer's responsibility to check with their local vehicle's dealer for warranty disposition before the installation of the product.

It is the responsibility of the distributor and/or the retailer to review all warranties and warnings of Fabtech products with the consumer prior to purchase.

Fabtech reserves the right to supercede, discontinue, change the design, finish, part number and, or application of parts when deemed necessary without written notice. Fabtech is not responsible for misprints or typographical errors within the catalog or price sheet.