

# BOX KIT # 71002

## 4WD 88-98 CHEVY / GM IFS 6-LUG 6.5" SERIES II SUSPENSION SYSTEM



### INTRODUCTION

Installation requires two professional mechanics. Be sure the vehicle is in excellent working condition-repair or replace all worn parts. Read instructions several times prior to beginning installation. Check to make sure you have all needed parts and know where to install them. Read each step completely.

### NOTES:

- Front coil springs, rear kit(s) or rear leaf springs, and shock absorbers are purchased separately and are also required for proper installation of this system.
- ( ) denotes foot pound torque readings after each appropriate fastener.
- Prior to attaching components, be sure mating surfaces are free of grit, grease, under coating, etc.
- After installation is complete, the vehicle will require a front end alignment.

### IMPORTANT

Prior to disassembly, identify each part and place the appropriate mounting hardware with it. Contact your Dick Cepek Race Series Suspension dealer if any components are missing before beginning any work on the vehicle.

### PARTS LIST (p/n DCS 71002 – box kit)

QTY.	DESCRIPTION	ITEM NUMBER	ILLUS. / FIGURE#
1	“X” Member Main Link	DCS 01022	37
1	“X” Member Short Link (A)	DCS 01023	37
1	“X” Member Short Link (B)	DCS 01040	37
2	Horizontal Impact Strut	DCS 01024	31
1	Impact Strut Bracket (driver)	DCS 01025	31,32
1	Impact Strut Bracket (passenger)	DCS 01026	31,32
1	Hardware Kit – “X” Member Containing: (6) 5/8” (18) RHT Short Jam Nuts (grade 5) (5) 5/8” (11) x2” Cap Bolt (grade 8) (5) 5/8” (11) Steel Lock Nuts (6) 5/8” SAE Flat Washer (grade 8) (1) 5/8” (11) x 1-1/2” Cap Bolt (grade 8) (1) 5/8” (11) Half Heights Steel Lock Nut	DCS 01034	
1	Hardware Kit – Impact Struts containing: (4) 7/16” (14) x 3-1/2” Cap Bolts (grade 5) (4) 7/16” (14) Steel Lock Nuts (4) 7/16” SAE Flat Washer (grade5) (4) 1/2” (13) x 2-1/2” Cap Bolts (grade 5) (4) 1/2” (13) Steel Lock Nut (4) 1/2” SAE Flat Washer (grade 5)	DCS 01035	
1	Bushing Kit – Horizontal Impact Struts	DCS 01201	
2	Front Extended Brake lines (w/ crush washers)	DCS 01010	
6	Race Style Rod Ends (5/8”) Male RHT	DCS 08900	16,17

Also needed for installation of this suspension system:

- Dick Cepek Series I Suspension System (box kit 71000 & 71001) \*\*
- Dick Cepek Rear Bock or Add-A-Leaf Kit \*\*
- Dick Cepek Race Series Shock Absorbers \*\*

\*\* = see product application guide for specific part numbers required per vehicle type

## **SERIES II INSTALLATION**

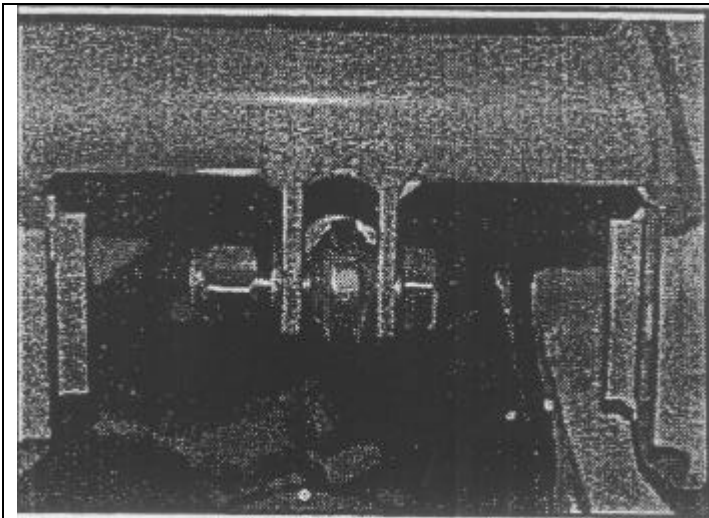
1) "X" Member – Layout the tubular "X" member and screw in the 5/8" heim ends with jam nuts into each end. Attach the short tubes to the main tube using 5/8" x 2" bolts (leave loose). The "X" member should be installed into the lower Crossmember tabs with the bent tube under the differential, and the short side of the long tube pointing rearward towards the passenger door (SEE PHOTO 37).

Adjust the heim ends to fit into the tabs and insert one 5/8" x 1-1/2" bolt into the tab under the differential and use the short 5/5" lock nut. All other positions will take the 5/8" x 2" long bolts with washers and nuts facing upwards. Apply thread lock and torque to 80 lbs. Align the heim ends within the tabs and tighten the jam nut to 50lbs. (SEE PHOTO 17)

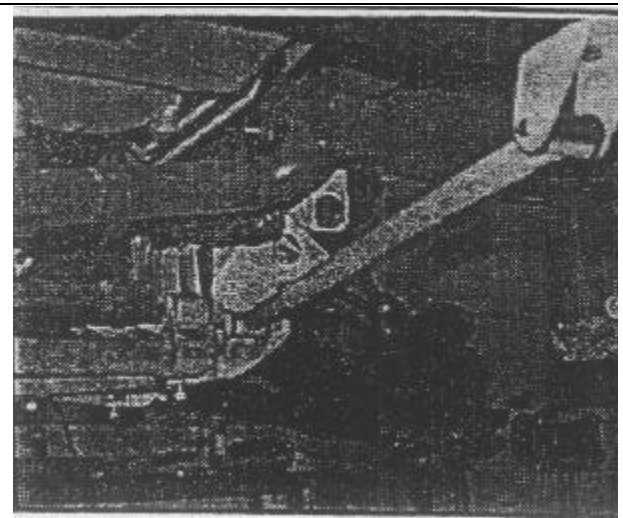
2) Horizontal Impact Struts- Install bushing kit (DCS part # 01201) into the two horizontal impact struts. Utilizing the stock hole in the transfer case Crossmember, place the passenger side impact strut mount (DCS part # 01026) up to the stock bolt hole and bolt in place using 1/2" x 2-1/2" bolt. Scribe the second hole next to it on the bottom of the Crossmember (SEE PHOTO 32). Remove bracket and center punch the scribed hole. Drill out to 1/2". Install strut mount using stock hardware and 1/2" x 2-1/2" bolt, nut and washer. Apply thread lock and torque to 80 lbs. Install the impact Strut into the tabs on the backside of the rear Crossmember using 7/16" x 3-1/2" bolts, nuts and washers. Apply thread lock and torque to 50 lbs. Install the rear of the strut to the mount located beneath the transfer case Crossmember using 7/16" x 3-1/2" bolts, nuts and washers. Apply thread lock and torque to 50lbs. (SEE PHOTO 31). Repeat this step for the drivers' side.

3) Replace existing factory front brake hoses with the Dick Cepek extended brake hose supplied in this box kit. (Use separate instructions).

4) Re-check all nuts and bolts for proper tightness. Re-check entire front of Series I system for proper tightness.



**PHOTO # 17**



**PHOTO # 31**

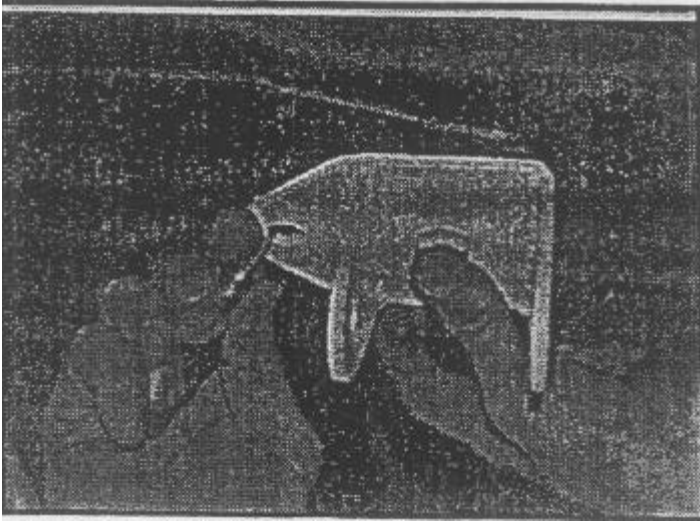


PHOTO # 32

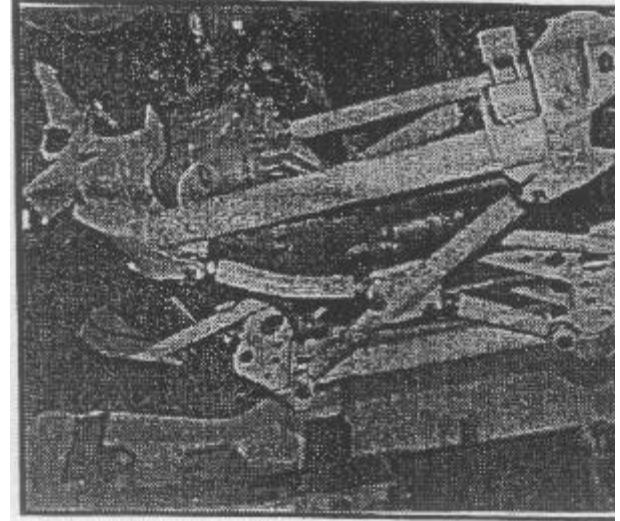


PHOTO # 37

### **FINAL PROCEDURES**

- 1) With the front tires pointing straight ahead, the steering wheel crossbars will be misaligned. The center the steering wheel position is achieved. Then tighten the clamp bolts.
- 2) Cycle steering all of the way to the right and to the left inspecting steering, suspension and driveline systems for proper operation, tightness and adequate clearance. If brake hose fittings are touched, recheck lines for leaks. Be sure all hoses/wiring are of adequate length. Repeat this inspection with the suspension unloaded and hanging.
- 3) INSTALL "WARNING" DECAL (metallic sticker) TO THE INSIDE OF THE DRIVER SIDE DOOR JAM NEXT TO THE V.I.N. PLATE.
- 4) HANG MIRROR TAG WITH WARNING AND WARRANTY REGISTRATION CARD FROM REAR VIEW MIRROR!
- 5) Readjust headlights to proper setting.
- 6) Check the vehicle for proper alignment. It may be necessary to replace alignment cams to achieve proper alignment settings.

## **CAUTION AND WARNING INFORMATION**

Installation of these parts will modify the height of the vehicle and may raise the center of gravity. Altered height modification and off-road operation may increase your vehicle's susceptibility to roll over conditions and may cause serious injury or death. Many states regulate the height modification to each vehicle. Check the laws in your state for exact specifications. Height modifications may affect the reaction, ride, and handling and wear factor of your vehicle's components. Height modifications may require other adjustments to the vehicle.

A professional mechanic should install all Dick Cepek Race Series suspension components.

All vehicles must be aligned within 100 miles after installation of these parts.

Always use extreme caution when operating your vehicle in conditions, which may cause loss of balance or control. Avoid sharp turns and abrupt maneuvers, which may cause a vehicle to roll over or have an accident.

***Always wear a seat belt. Never drink uses drugs and drive!***  
**DRIVE RESPONSIBLY!!**